

Customer :

customer

Customer part :

customer part

Comment :

Comment

S1=8.56

S2=8.94

Tmax=453

Tp S2=492.0

PI=0.49

HI=120

Sample =1773.80

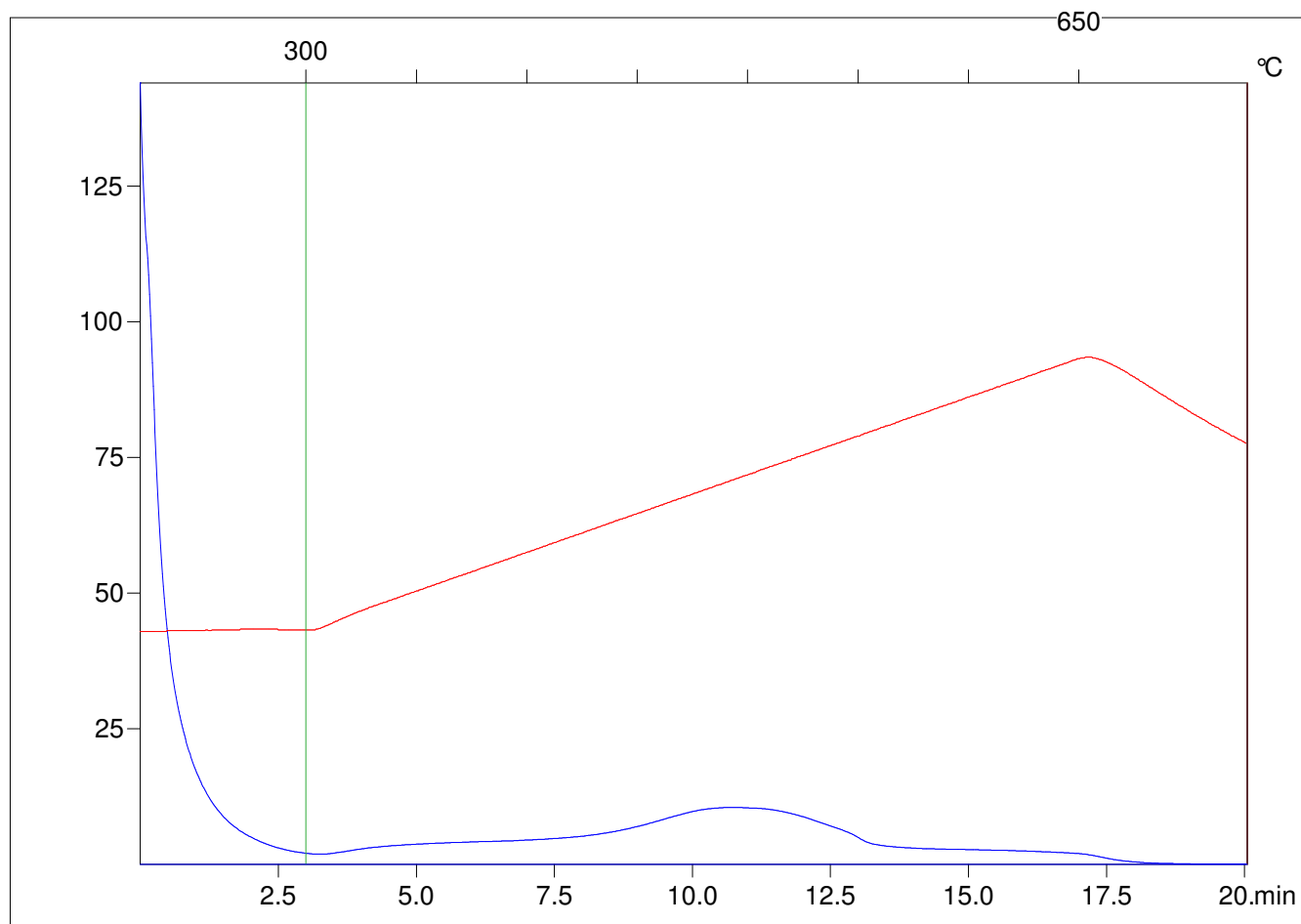
Method =Bulk Rock

Cycle=Basic

KFID(10*9)=1444

Qty =70.0

TOC=7.44



C:\VINC\PK3_1792\PK051.R00 : FID pyrolysis graphic

State Ok

Pyro Status Negative value

Oxi Status Negative value